

YORK YLPA HEAT PUMP

Air to water.
Naturally.



Sound

Noise pollution as low as 54 dBA*

Ease of installation

Plug and play solution



Sustainability

Zero ODP

Efficiency

Class A energy efficiency

*Sound pressure at 10 metres according to Eurovent conditions.

Introducing the new YLPA Heat Pump.

Everyone is looking for a heat pump that is energy efficient, easy to install, quiet to run, and supported by a comprehensive and skilled backup service. Welcome to the reality of the YLPA Heat Pump.

Efficiency

Eurovent A-Class certified full load efficiency, high part load efficiency, improved defrost cycle, extended operating envelope.

Sound

Designed for incredibly quiet operation.

Sustainability

European Commission 2020 renewables targets compliant, specifically designed for HFC-410A.

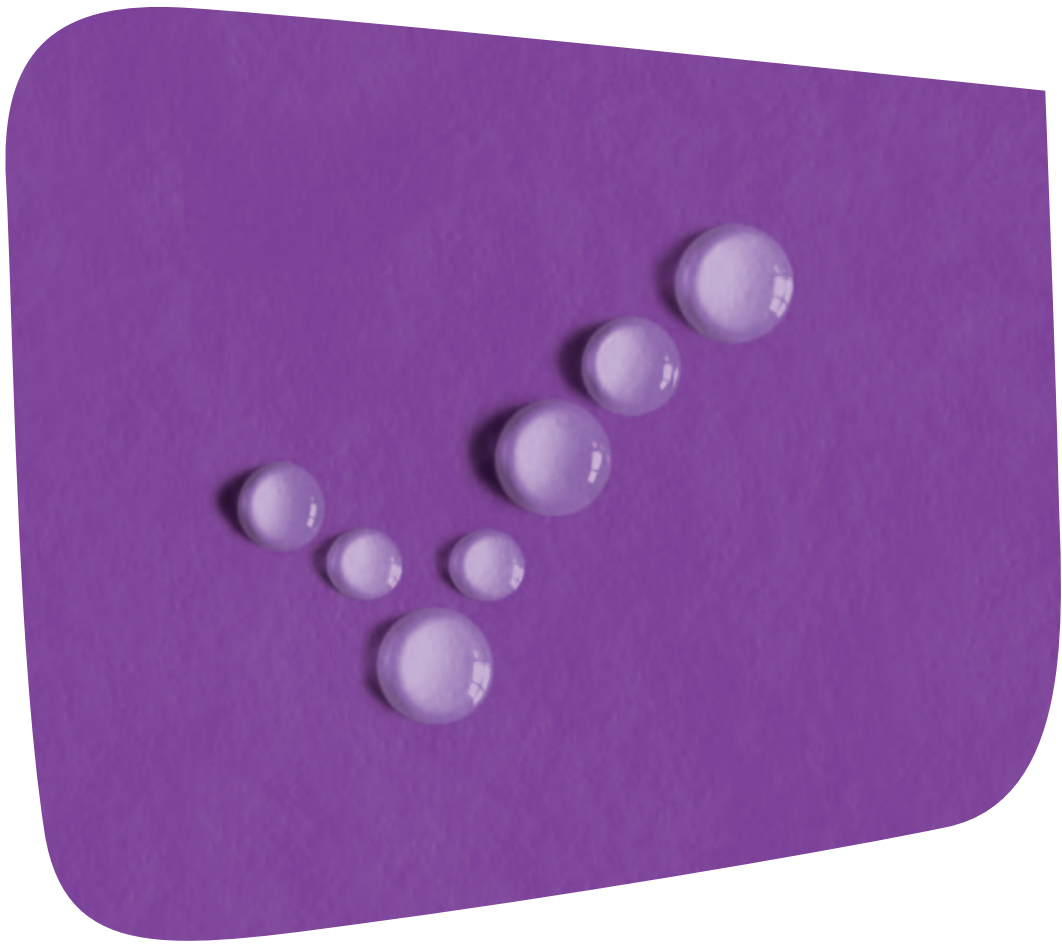
Ease of installation

Quick and easy to install, compact design, Metasys® ready.

Reliability

Our third generation of fully factory tested scroll heat pumps. And thanks to our extensive service solutions and support, minimal maintenance is assured.

It is simple, quiet, efficient – and all you need.



Designed, built and tested for efficiency.

The YORK® YLPA is our third generation of scroll heat pumps, and our design engineers now have an extensive knowledge of the technology, continually honing the design to achieve high performance while maintaining excellent reliability and increasing energy efficiency.

Full and part load efficiency

The incorporation of multiple scroll compressors results in high full load efficiency – up to EER 3.17 – and part load efficiency – up to ESEER 4.4 – in cooling mode.

Full load efficiency levels exceed the requirements of the Eurovent A-Class **certification program**, in both cooling and heating modes. The operation at **part load exceeds full load** efficiency, driving down operating costs and further increasing efficiency.

Designing for defrost

The YLPA development process focussed on minimising the impact of the defrost cycle on the overall efficiency of the pump through:

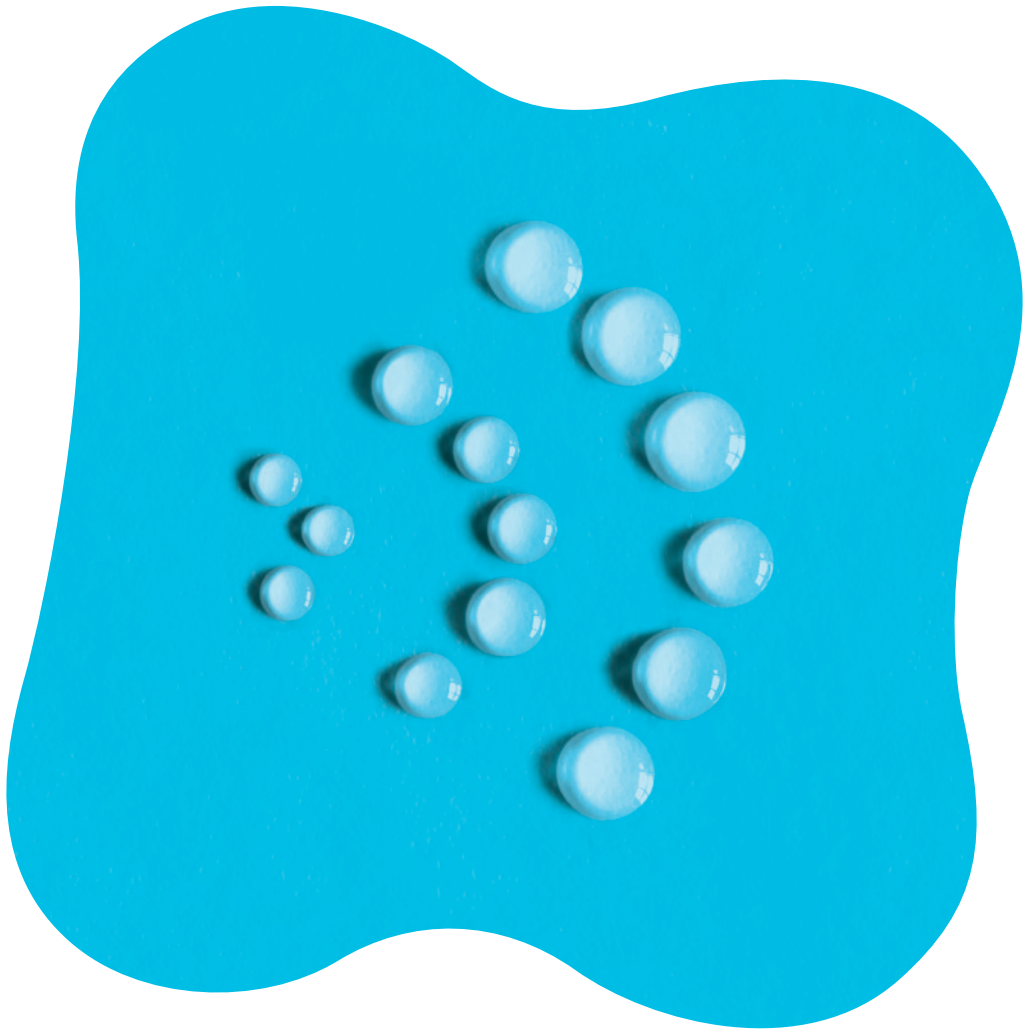
- Optimising **liquid distribution** through the coils in heating mode
- **Coil module design** and **fan control** to prevent moisture accumulation on the coil fins
- **Auto-adaptive controls** to optimise the frequency and duration of the defrost cycle itself.

Less need for a boiler

The extended envelope enables operation down to **-10°C** with production of hot water temperature **above 45°C**, thus minimising the need for operating a support boiler.

Tested all over

Global collaboration has also allowed us to gain invaluable experience thanks to **extensive test programs** in our state-of-the-art laboratories across the globe, as well as in real working situations on a number of field trial sites before production begins.



Sound investment.

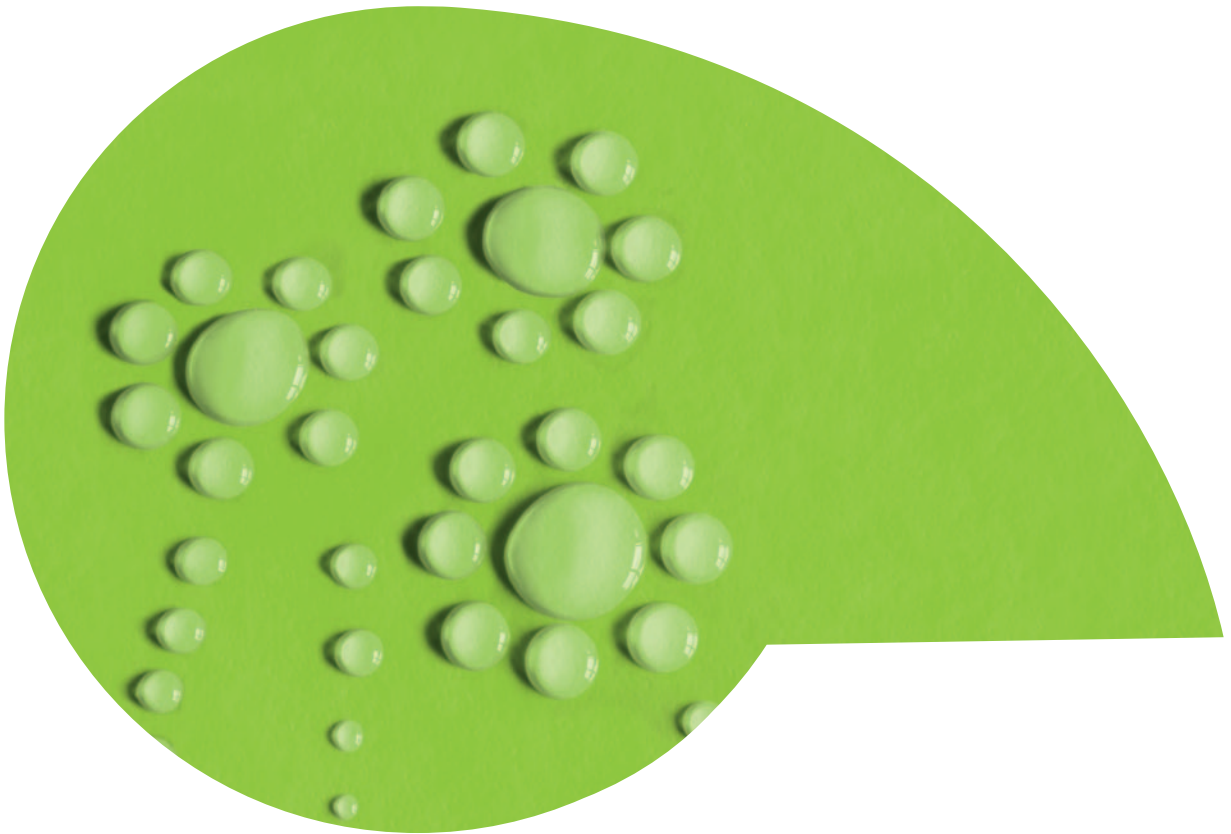
Generally with heat pumps you have a choice: efficient, or quiet. The YORK® YLPA offers the best of both worlds.

The YORK® YLPA has been designed not only to meet **sound level** requirements during the day, when background noise levels often mask unit sound levels, but also at night, when background levels are lower.

It's been specifically designed for low sound operation by arranging all the compressors together in one **acoustically sealed enclosure**, and **aerodynamically efficient fans** in separate compartments prevent air recirculation and reduce wasteful and noisy stop/start operation.

It runs so quietly, at sound levels as **low as 54 dB(A)**, you can have an undisturbed conversation standing right next to it.

It's also **flexible**, with a variety of options like variable fan speeds and compressor sound attenuation so you can tailor it to your site's requirements.

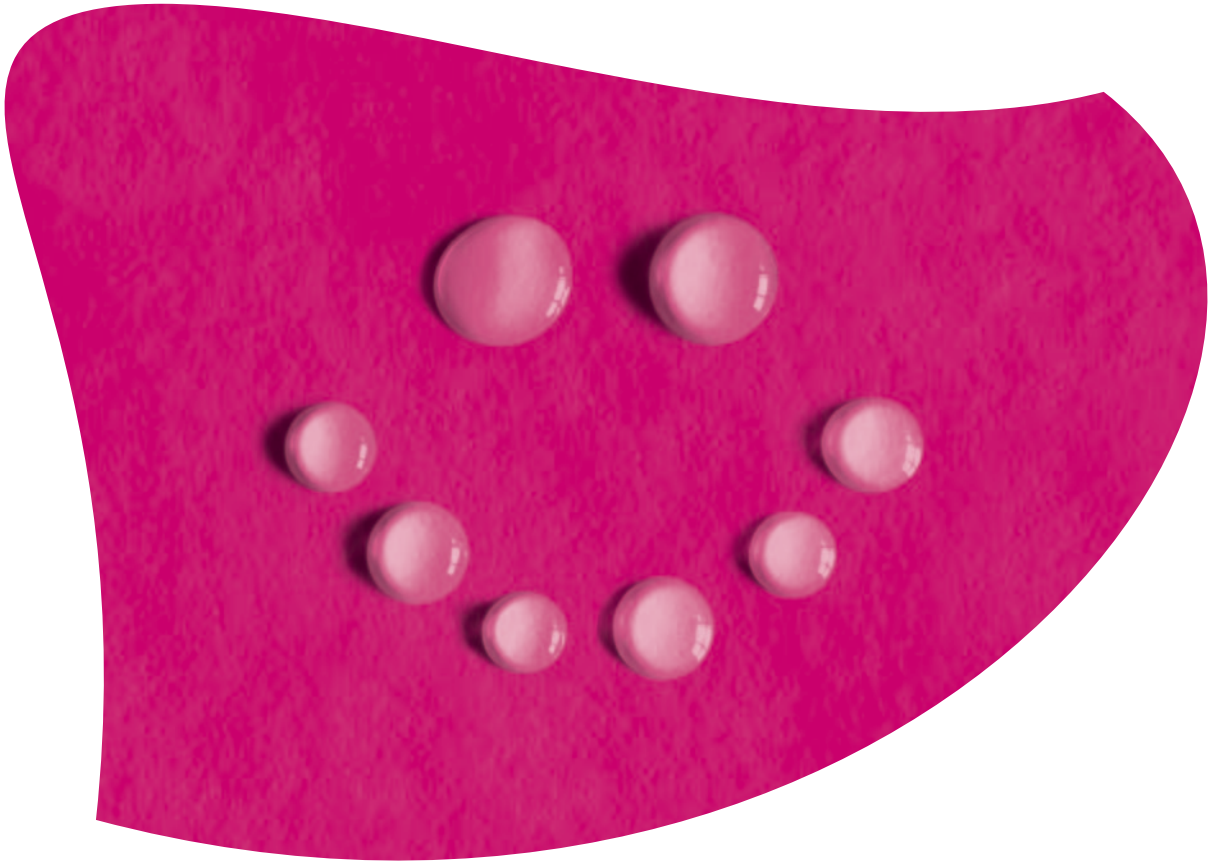


The sustainable solution.

The YORK® YLPA is not only an energy-saving tool, it's also renewable energy technology, considerably reducing CO₂ emissions and complying with **European Commission 2020** renewables targets.

It's specifically designed for **HFC-410A**, which has zero ozone-depletion potential (ODP) and is aligned with the Montreal Protocol.

The **European Partnership for Energy and the Environment (EPEE)**, the de facto voice of the heating, cooling and refrigeration industry in Europe, has stated that heat pumps of the calibre of the YORK® YLPA can help European Member States achieve their renewables targets, and should be included in their National Renewable Energy Action Plans, as well as in their National Energy Efficiency Action Plans.



Plug and play.

The York YLPA is straightforward to install, a simple 'plug and play' unit with **single point power connection** and optional hydronic kit.

YLPA requires a **minimum water volume** to satisfy only one minute of unit operation at minimum cooling or heating capacity, so on standard air-con systems, such as Fan-Coil for example, a buffer tank is not required.

The pump is very **compact** in design, with all necessary hydronic components integrated, so there's no requirement for additional floor space. This makes it ideal both for saving floor space in new builds, or squeezing into retrofit upgrades.

Either way, with the **support** of our fully trained technicians during the commissioning period, installation is a breeze.

Metasys systems have been preconfigured to automatically communicate with the York YLPA, so supervision through Metasys could not be easier. It's also natively capable of communicating with BMS systems through Bacnet, Modbus, N2 and Lonworks protocols.

YLPA has a **microprocessor controller** with a 40 character 'plain language' display of temperatures, pressures, operating hours, number of starts and start/stop holiday times. Control functions include accurate liquid temperature, compressor lead/lag, system safety protection and integral circulating pumps.

Every YLPA pump is **fully factory tested** before shipment in order to ensure it's in perfect working order, and ready for trouble free installation.



Why choose YLPA?

Our machines are subjected to rigorous pre-production testing and extensive trials, but it doesn't stop there. Every machine is additionally fully tested before being shipped out to make sure that, on arrival, installation can be carried out on time and everything is up and running to schedule, hassle free.

Once it's running, we are there to keep it running. To ensure maximum usage and minimum worry, our service and parts network offers regular Planned Service Agreements (PSA) for the York YLPA, making it easy to keep your system in optimum condition – there's no one better placed to maintain your equipment than its original manufacturers.

In the long run, regular maintenance will save you money, and also help you do your bit to contribute to a sustainable world, ensuring equipment will be operating as energy efficiently as possible.

For more information, visit www.johnsoncontrols.co.uk



Technical specifications.

High Efficiency Models

	Cooling Capacity [kW] ¹	Cooling EER ³	ESEER ⁴	Heating Capacity [kW] ²	Heating EER ³	Sound Pressure [dB(A)] ⁵	Length [mm]	Width [mm]	Height [mm]	Operating Weight [kg]
0355HE	359	3.26	4.5	369	3.27	55	4937	2246	2501	4750
0425HE	444	3.24	4.5	460	3.22	55	5854	2246	2501	5400
0505HE	526	3.23	4.6	554	3.20	55	6971	2246	2501	6100
0570HE	590	3.11	4.4	600	3.24	56	6971	2246	2501	6495
0640HE	647	3.02	4.4	666	3.23	56	6971	2246	2501	6695

Standard Efficiency Models

	Cooling Capacity [kW] ¹	Cooling EER ³	ESEER ⁴	Heating Capacity [kW] ²	Heating EER ³	Sound Pressure [dB(A)] ⁵	Length [mm]	Width [mm]	Height [mm]	Operating Weight [kg]
0340SE	342	3.08	4.0	351	3.11	54	4937	2246	2501	4600
0415SE	424	3.01	4.1	439	3.18	55	4937	2246	2501	5000
0495SE	513	3.00	4.1	527	3.19	56	4937	2246	2501	5200
0560SE	568	2.96	3.9	581	3.17	55	5854	2246	2501	5695
0610SE	636	2.97	3.9	666	3.10	56	6971	2246	2501	6235

1: Cooling Capacity at Eurovent Conditions, entering/leaving chilled water temperature 12°C/7°C, ambient temperature 35°C

2: Heating Capacity at Eurovent Conditions, entering/leaving hot water temperature 40°C/45°C, ambient temperature 7°C

3: Energy Efficiency Ratio

4: European Seasonal Energy Efficiency Ratio

5: Sound Pressure at 10 metres according to Eurovent conditions. LS models

6: Subject to change without prior notice



For smartphone.

Energy solutions / Large tonnage chillers / [Small tonnage chillers](#)
Fire & security solutions / Industrial refrigeration solutions
Residential & commercial HVAC solutions / Building Management Systems
HVAC control products / Global WorkPlace Solutions
HVAC service, parts & retrofit solutions

